

REPLACEMENT BRUSH HEADS

Hydrabrush has 5 brush head styles for your custom needs.
Visit www.hydrabrush.com/heads or call 1-888-813-6631

CUSTOMER SERVICE

If you have any questions or comments about HydraBrush, please contact customer service at 1-888-813-6631 or visit the FAQ on our website at www.hydrabrush.com

CONTACT

HydraBrush, Inc.

701 S Andreasen Dr, Suite C
Escondido, CA 92029

www.hydrabrush.com
info@hydrabrush.com
1.888.813.6631

Please register your HydraBrush at:

www.hydrabrush.com/register

Benefits of Registration:

1. Automatic notification of future promotions
2. Assurance of warranty registration

WARRANTY

The 1 year warranty covers failures due to defects in materials and workmanship, and DOES NOT cover brush heads, normal wear and tear, batteries, water damage, cosmetic damage, damages incurred in shipment, or failures which are caused by products not supplied by HydraBrush, or failures which result from accidents, misuse, abuse, neglect, mishandling, misapplication, alteration, improper maintenance, power line surge, lightning damage, modification, or service by anyone other than an Authorized Service Center, or damage due to acts of nature. Warranty is void if HydraBrush has corrosion due to water entering the battery compartment. If repair is needed during the warranty period, the purchaser will be required to furnish a sales receipt/proof of purchase. Customer will be charged for the repair of any unit received without such proof of purchase.

For warranty/repair, call: 1-888-813-6631 or email: service@hydrabrush.com.



the only fully automatic toothbrush

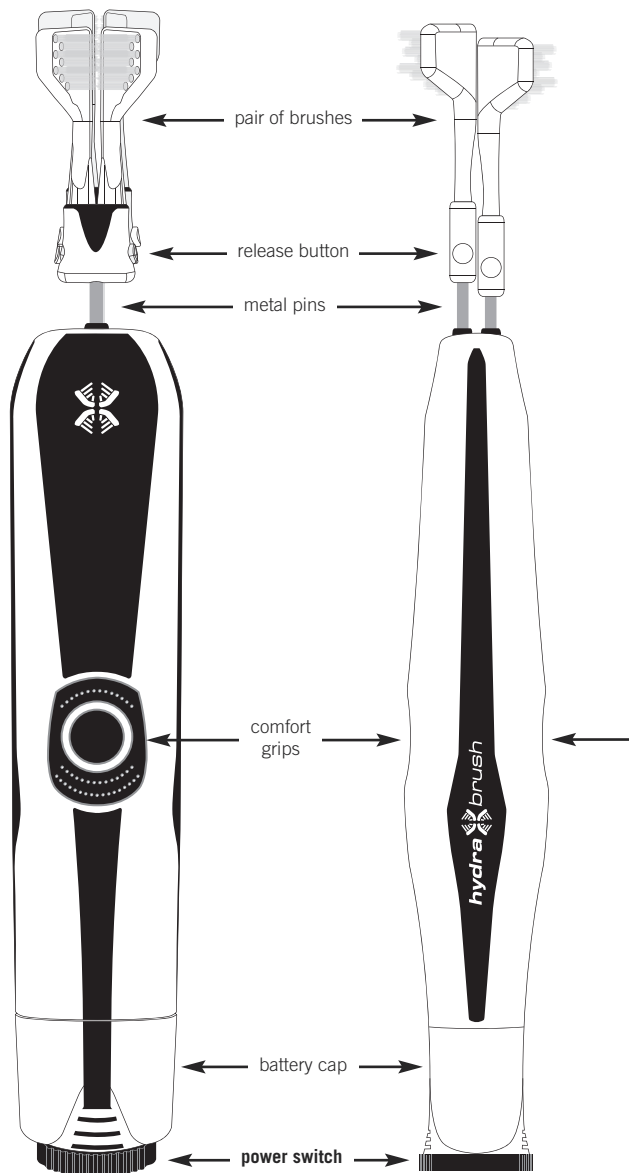
User Manual

QUICK START

Model 108A-R

www.hydrabrush.com
1.888.813.6631

Keep for future reference



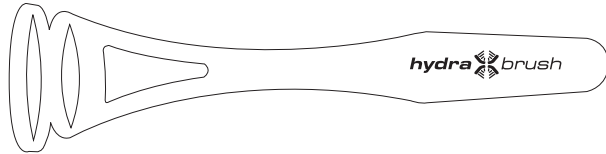
TROUBLESHOOTING FAQ

- Q Problem: Brush head plastic hits my teeth.**
A Solution: You are not using the brush according to instructions. Refer to “How It Works” DVD and Brushing Instructions.
- Q Problem: Brush won’t operate.**
A Solution: Batteries are dead. Recharge batteries 12 hours, **OR** Check battery polarity (- and +). See battery installation instructions, **OR** Switch is not fully rotated on. Rotate switch clockwise to obtain ON position, **OR** There may be corrosion inside battery compartment. Contact customer service.
- Q Problem: My gums are sore after using HydraBrush.**
A Solution: Continue using HydraBrush but significantly DECREASE the brushing time. Brush for only 15 seconds or less on each side until the gums toughen and become healthier. Be sure to use RED bristled brush head for the first several weeks.
- Q Problem: My gums are bleeding.**
A Solution: HydraBrush is locating and brushing areas that have been missed with other toothbrushes. Some bleeding during the first 3-5 days of use is normal. If excessive bleeding occurs for more than a week, stop using and contact customer service.
- Q Problem: Metal pins at end of handle are not even.**
A Solution: Metal pins are never the same length. Depending on where the brush starts/stops, one pin will always be longer than the other.
- Q Problem: Brush Head falls off.**
A Solution: Push brushes all the way onto the metal pins until you feel and hear a “snap.”
- Q Problem: I cannot remove brush head.**
A Solution: Depress the release button on brush head completely and pull firmly on the brush. To avoid this problem in the future, clean the notch in the metal pins with rubbing alcohol.
- Q Problem: Batteries won’t charge.**
A Solution: Check battery polarity (-/+). See battery charging instructions, **OR** Batteries have exceeded the number of times they can be recharged. Replace with new AA NiMH rechargeable batteries.

Please visit www.hydrabrush.com for a complete list of Frequently Asked Questions. Just click on FAQ.

TONGUE SCRAPER

The tongue scraper removes plaque build-up on tongue and will give you fresher breath. To Use: Depress scraper at back of tongue, apply light pressure onto tongue and draw outward to remove plaque. Rinse scraper frequently.



CLEANING

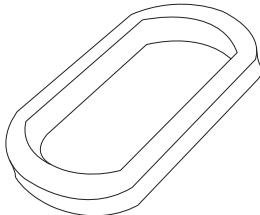
While brush is on, rinse brush head under hot running water after each use. Periodically clean handle with a damp cloth. Take care not to allow ANY water to enter the battery compartment. If the brush fails to operate due to corrosion in the battery compartment, the warranty is void.

TRAVEL

A travel pouch is included for your convenience. For travel abroad, be sure to either fully charge the rechargeable batteries or you can also use any regular AA Alkaline batteries. The charger has built in switching power technology for worldwide use (100-240V AC).

DRIP SHIELD

This soft, white, rectangular rubber component can be slipped over the metal pins before installing brush head. Slip onto handle until snug. This helps to prevent water from running down the length of the handle during use.



hydra  **brush**

the only fully automatic toothbrush

CONGRATULATIONS

With your purchase of HydraBrush, you are on your way to dramatically improving the condition of your oral health. The revolutionary brush head design gives you the power to automatically brush according to the dentist recommended Bass technique. No other toothbrush can clean all surfaces of your teeth and gums, simultaneously. Now go ahead, experience HydraBrush and spread the word.

Before you begin using HydraBrush, read this user manual and watch the "How It Works" video on the enclosed mini DVD or on our website at www.hydrabrush.com.

For the first several weeks, brush with the Ultra-Soft Brush Head (Red Bristles). Brush for only 30 seconds for the first several days of use.

Please visit our website at www.hydrabrush.com or call 1-888-813-6631 with any questions or feedback.

Sincerely,
The HydraBrush Team

IMPORTANT SAFEGUARDS

Basic safety precautions should always be followed when using any electrical product.

DANGERS

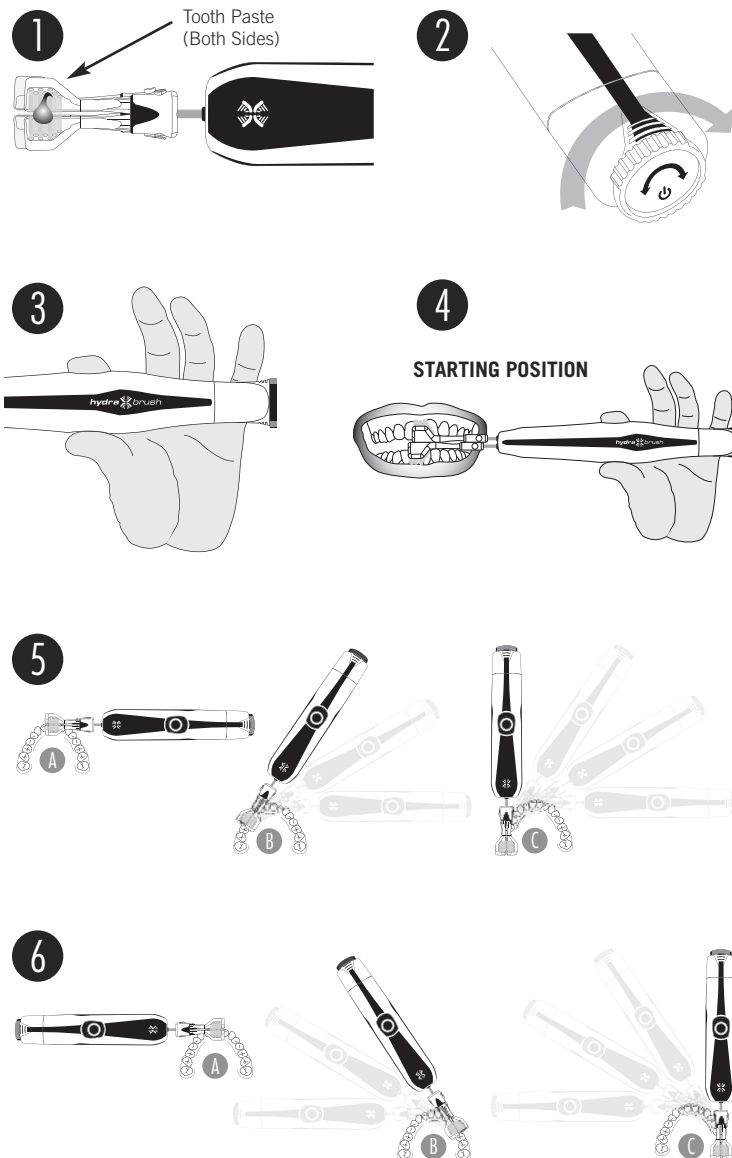
1. Do not place or store the charger where it can fall or be pulled into a tub, sink or toilet.
2. Do not place or drop the charger into water or other liquid. If this happens, dispose of charger and order a new charger.
3. Do not plug charger into extension cords or surge protectors. **PLUG DIRECTLY INTO WALL OUTLET ONLY.**

WARNINGS

1. Close supervision is recommended when this product is used by or on children or disabled.
2. Use this product only for its intended purpose as described in this booklet. Do not use the toothbrush handle or brush head if damaged or if there are any loose or damaged components.
3. If the brush head is bumping your teeth, you are not using the product correctly. Please refer to brushing instructions and watch "How It Works" DVD.
4. **Both halves of the brush head must be installed. Do not operate with one metal pin exposed.**
5. DO NOT charge batteries for more than 20 hours at one time.

MEDICAL CAUTIONS

1. If you recently had oral or gum surgery, it is imperative that you use this product with the **RED** bristled brush head only for a maximum of **10 seconds per side** until your gums have healed. Thereafter, you can resume normal brushing per the instructions.
2. You may experience minor bleeding for the first several days of use. This is normal since HydraBrush is reaching areas that were previously missed. If excessive bleeding occurs for more than a week, stop using the product and contact customer service at 1-888-813-6631 or email: info@hydrabrush.com
3. Do not use if bristles are bent or crushed. If this occurs, replace brush head.



BRUSHING INSTRUCTIONS

Brushing your entire mouth should only take 40 seconds (20 seconds/side) except THE FIRST FEW DAYS, USE ONLY 15 SECONDS/SIDE. You may experience minor bleeding.

This is normal, and is an indication that HydraBrush is now brushing areas of the gums that were not reached with other brushes, and consequently, you may experience minor gum discomfort and bleeding during the initial several days of use. Each day thereafter, increase brushing time as your gums toughen and become healthier.

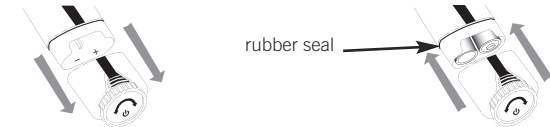
To be sure brush head does not bump teeth, follow these instructions:

See corresponding pictures 

1. Wet bristles and apply a pea sized amount of toothpaste, if desired.
2. **Before putting the brush in your mouth**, turn it on by rotating switch, located at base of handle, clockwise.
3. Hold handle with thumb and one finger ONLY, keeping the handle horizontal. Do not grip the handle with your hand, as it needs freedom to move along your teeth. The comfort grips in the middle of the handle are not switches.
4. Bite into moving bristles with front teeth until you feel the brush massaging the gums. **DO NOT BITE TOO HARD.** Allow your teeth to position the brush, do not force it.
5. Gently move the brush from your front teeth to the back teeth, guiding the brush along the natural curve of your teeth. Then gently guide the brush toward the front. It is not necessary to move the handle vigorously back and forth. Let the brush head do the work.
6. Switch hands and brush other side of the mouth using same procedure.
7. Turn the brush off by rotating switch counterclockwise.

QUICK START

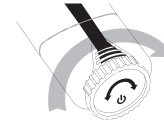
1. Charge batteries for a minimum of 12 hours before initial use (maximum 20 hours). See charging instructions.
2. Open battery compartment at base of handle by pulling on the battery cover. Insert batteries and replace cover by pushing firmly until you hear a snap or see that the white rubber seal is covered.



3. Install **RED** Ultra-Soft brush head, one at a time, with bristles facing outward, or back to back, away from each other. Align and push onto metal pin until it snaps. **Metal pins are never the same length.** Confirm brush head is installed by gently pulling on brush head.



4. Wet brush head, then apply a pea sized amount of toothpaste if desired.
5. **Before putting the brush in your mouth**, turn it on by rotating switch, located at base of handle, clockwise.

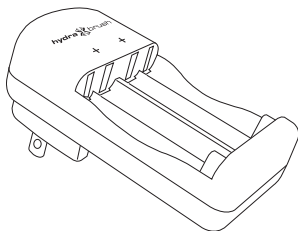


6. Bite & Guide! Brush ONLY 15 seconds on each side of the mouth (30 seconds total) for the first several days. See brushing instructions for further directions.
7. Turn brush off by rotating switch counterclockwise.
8. Please read the entire user manual and don't forget to register at www.hydrabrush.com

USER INSTRUCTIONS

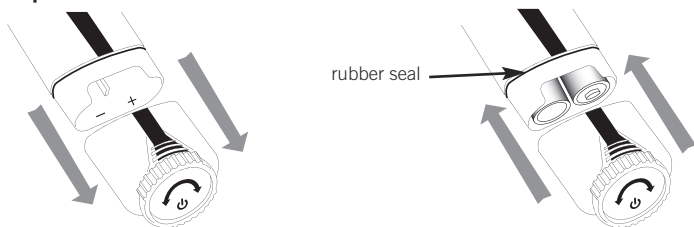
CHARGING AND INSTALLING BATTERIES

Insert 2 AA NiMH batteries (provided) into charger. Make correct contact for polarity (- and +); according to marking on battery charger. Plug charger in. Red LEDs will illuminate to indicate proper charging. The LED lights will NOT turn off when batteries are fully charged. Batteries should charge for a minimum of 12 hours (maximum 20 hours) before initial use to maintain performance. DO NOT charge batteries for more than 20 hours at one time.



Open battery compartment at base of handle by pulling on the battery cover. Insert batteries using correct polarity (- and +). Replace cover by firmly pushing it back onto handle until you hear a snap or see that the white rubber seal is covered.

This is very important so that water does not enter the battery compartment. Warranty is VOID if water corrodes the battery compartment.



Depending on your use of the toothbrush, your batteries should last approximately 50-60 uses before needing to be recharged. If you feel the batteries are weakening, charge them for a full 12 hours. The charger is safe to plug into a bathroom outlet. Use the charger cover as a moisture barrier. Do not attempt to charge batteries other than NiMH batteries.

BRUSH HEAD INSTALLATION

Note: A brush head consists of two halves of matching brushes.

For the first several weeks, use the **RED** Ultra-Soft brush head. After your gums become accustomed to HydraBrush, you can switch to the **GREY-BLUE** Extra-Reach Soft brush head, which is even more effective in plaque removal and gum stimulation.

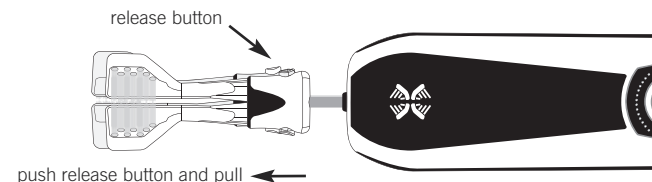
Install brush head, one half at a time, with bristles facing outward, or back to back, away from each other. Align and push onto metal pin until it snaps. **Metal pins are never the same length.** Confirm brush head is installed by gently pulling on the brush head.



BRUSH HEAD REMOVAL

Remove brush head by pushing release button, located on the side of the brush and pull away from handle body to remove. Repeat with other half.

Brush heads should be replaced every 90 days. Order at www.hydrabrush.com or 1-888-813-6631. Other brush styles are available upon request.



STORAGE

The countertop pedestal stores the handle and is also hygienic storage for extra brush heads. Store brush heads with bristle end up.