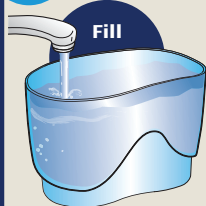
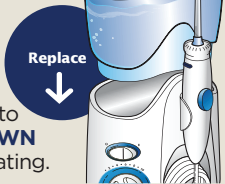


## QUICK START GUIDE

### 1 Prepare the Reservoir:

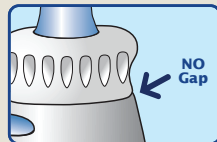
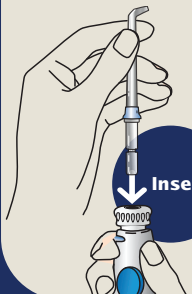


Remove the reservoir from base and fill with lukewarm water.



Replace the reservoir onto the base, **PRESSING DOWN FIRMLY** to ensure full seating.

### 2 Select and Insert Tip:



Press tip firmly into handle. When tip is properly inserted there should be no gap between control knob and handle.

### 3 Prime Unit (First Time Use Only):

#### Prior to Very First Use of Unit, Prime Unit:

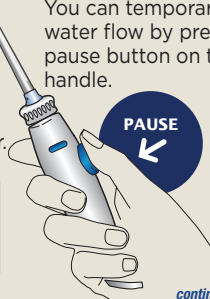
Set pressure control dial on base to **high**, point the handle and tip into sink. Turn unit **ON** until water flows from the handle, turn unit **OFF**.



### 4 Adjust Pressure and Pause Control:

For first time users, adjust pressure control to **lowest position**. Gradually increase pressure as you prefer.

You can temporarily stop water flow by pressing the pause button on the handle.

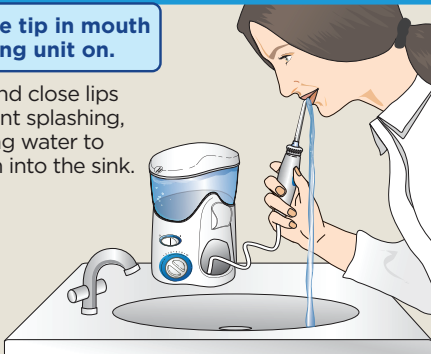


*continued on back*

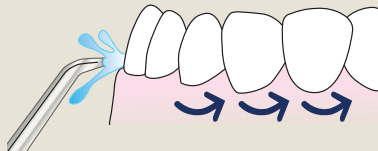
## 5 Using your Waterpik® Water Flosser:

Always place tip in mouth before turning unit on.

Lean over sink and close lips enough to prevent splashing, while still allowing water to flow from mouth into the sink. Turn unit **ON**.



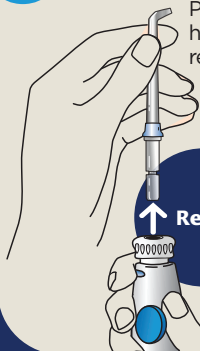
Aim the tip just above the gumline at a 90 degree angle.



Starting with the back teeth, follow the gumline and pause briefly between teeth.

Continue until all areas around and between teeth have been cleaned.

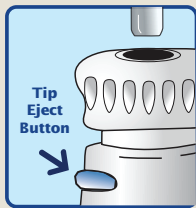
## 6 Tip Removal:



Remove

Push the tip eject button on the handle. The control knob will rise, releasing the tip. Remove the tip.

**Caution:** Do not press tip eject button while unit is running.



Tip Eject Button

## 7

**REGISTER YOUR  
PRODUCT  
ONLINE NOW!**

Receive up to  
**\$44**  
in savings.

[www.waterpik.com/register](http://www.waterpik.com/register)

Water Pik, Inc. 1.800.525.2774 • [www.waterpik.com](http://www.waterpik.com)

1730 East Prospect Road, Fort Collins, CO 80553-0001 USA

©2009 Water Pik, Inc.

20012848-F AA